

Inflatable boat GALA Atlantis A360Q

Technical drawing

Builder's plate

GALA
INFLATABLE BOATS

Model **A360Q** **6** + **1**

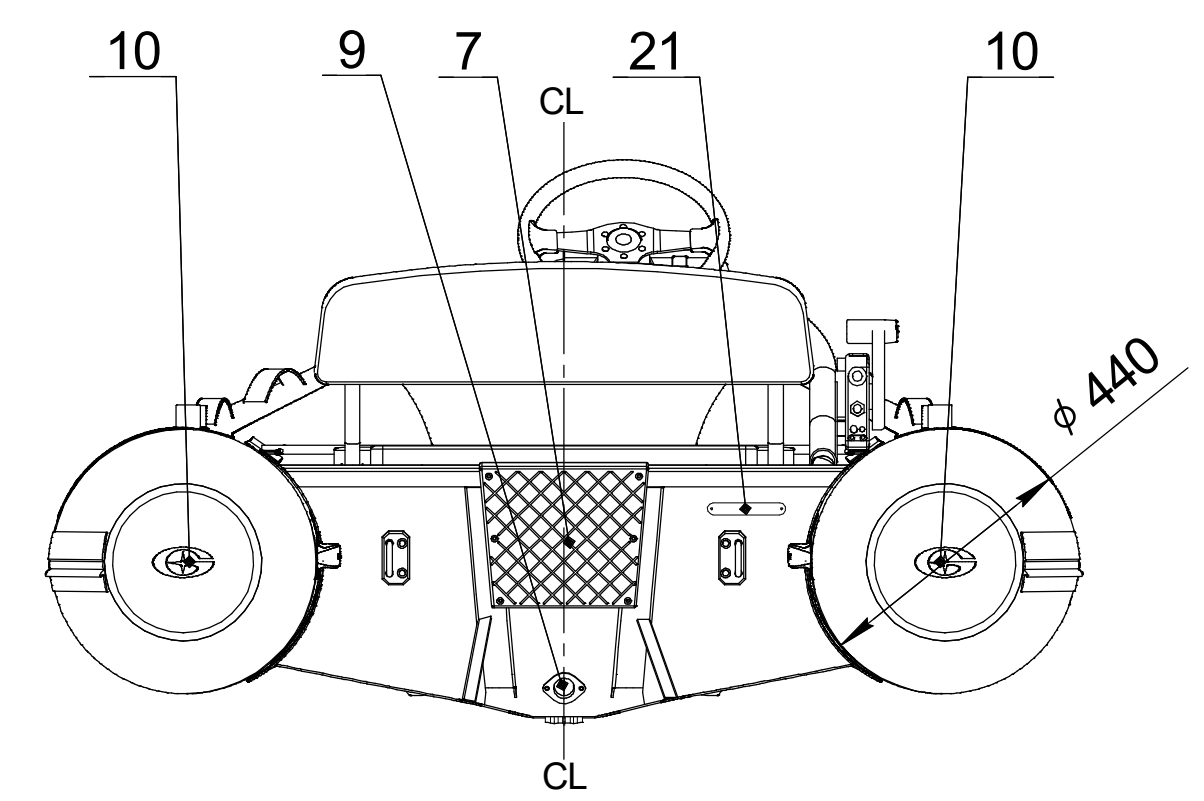
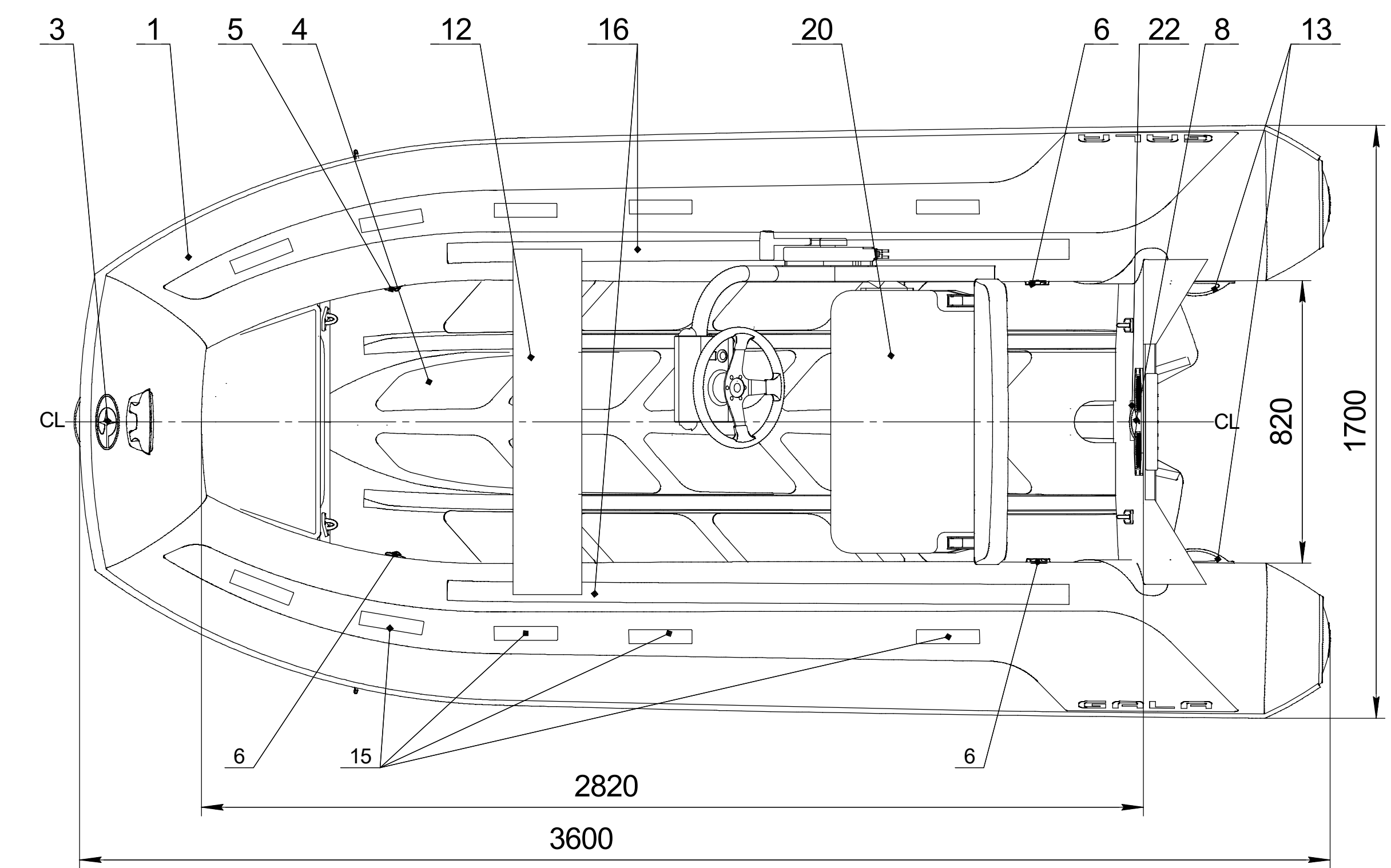
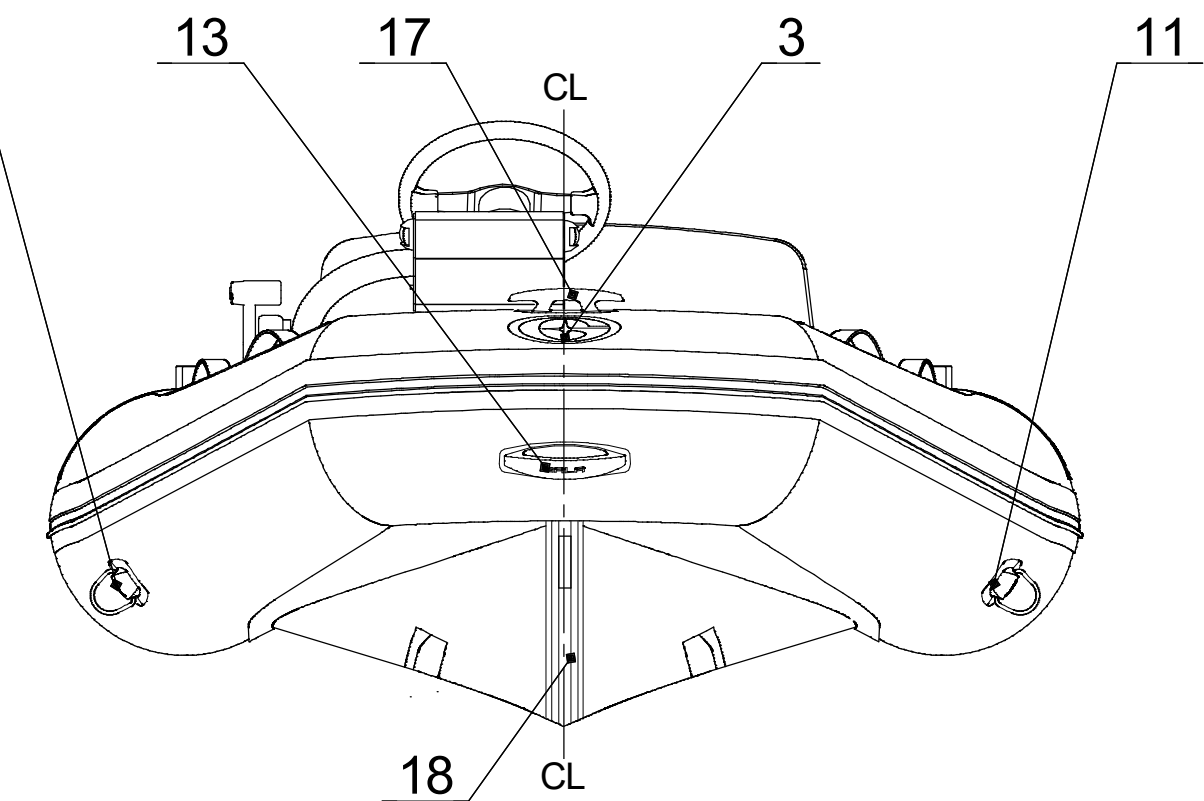
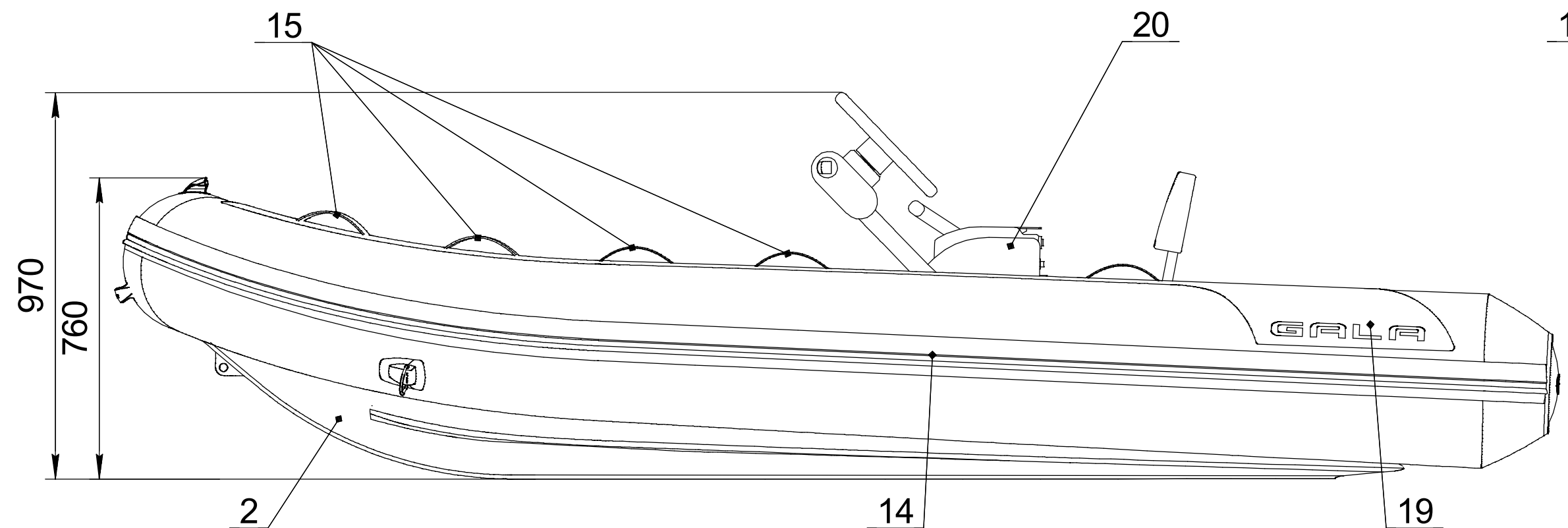
600 kg **1320** lbs

22.1 kW **30** HP Type **VII**

70 kg **154** lbs Cat. **C**

0.2 bar **2.89** psi International Standard ISO/FDIS-6185

MADE IN UKRAINE
 "CALIBR PROFI" LLC
4, Matlakhova Str., Dnipro, UKRAINE



Boat specification

Item	Item No	Description	Q-ty	Note
1		Inflatable tube for A360Q	1	
2		Aluminum hull for A360Q	1	
3		GALA logo front	1	
4		Antiskid decking	1	
5		Over-pressure valve	1	
6		Inflation-deflation valve	3	
7		Motor plate external	1	
8		Motor plate internal	1	
9		Expanding drain plug	1	
10		Tube end, PVC	2	
11		Towing eye, PVC	2	
12		Aluminum seat	1	
13		GALA handle, PVC	3	
14		Rubbing strake	1	
15		Safety grab handle	10	
16		Seat holder	2	
17		Bow Cleat Large	1	
18		Keel protector	1	
19		GALA logo	2	
20		AQUAHELM Steering console S-08	1	
21		CIN plate	1	
22		Builder's plate	1	
23				
24				

DRAWN	NAME	DATE	ITEM No:
CHECKED			TITLE:
ENG APPR.			GALA Atlantis A360Q
MFG APPR.			
Q.A.			
PROPRIETARY AND CONFIDENTIAL THE INFORMATION CONTAINED IN THIS DRAWING IS THE SOLE PROPERTY OF CALIBR PROFI LLC			SIZE
			DWG. NO.
			REV
			SCALE: 1:10
			WEIGHT:
			SHEET 1 OF 1