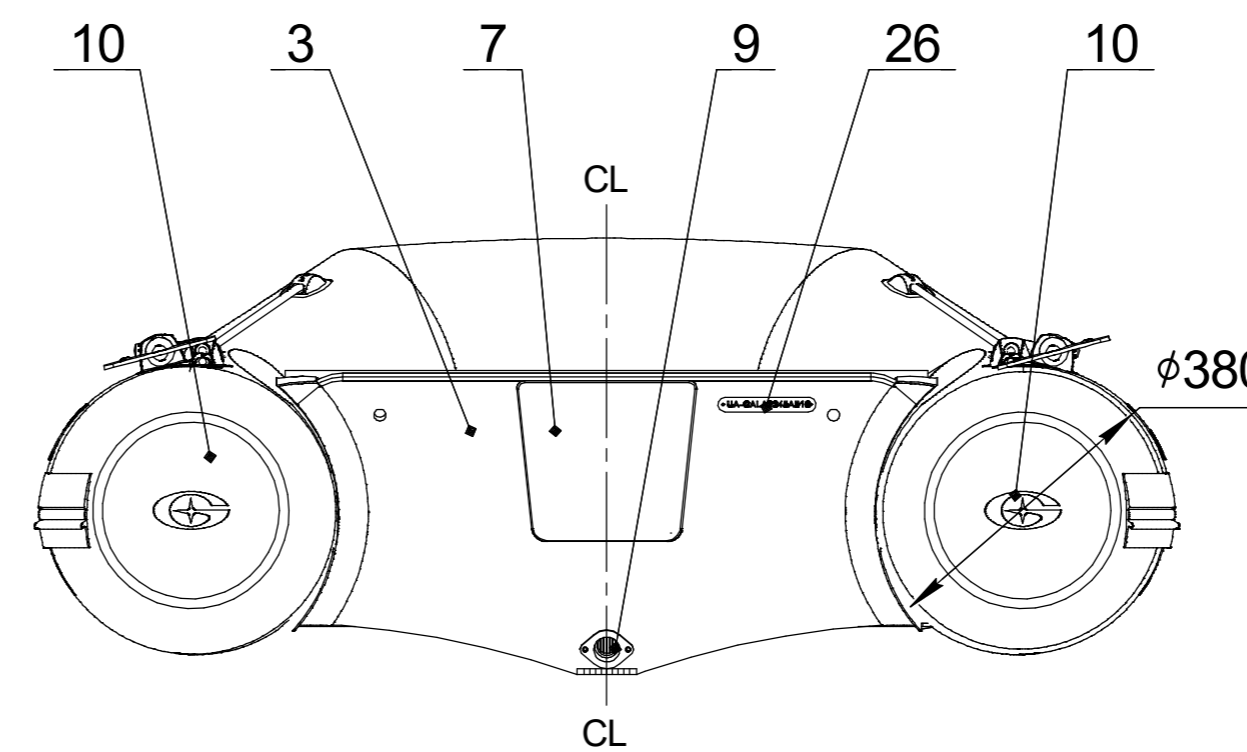
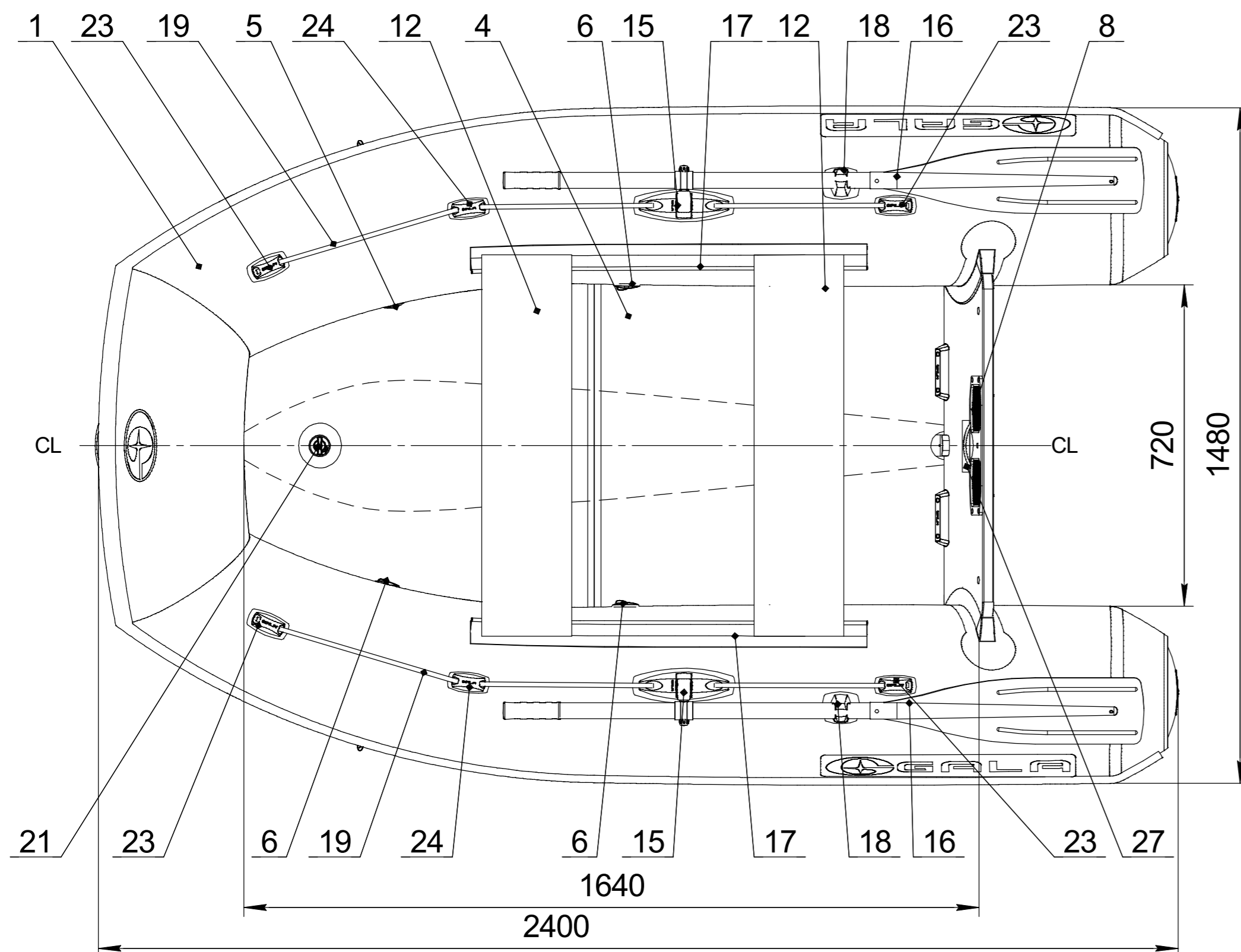
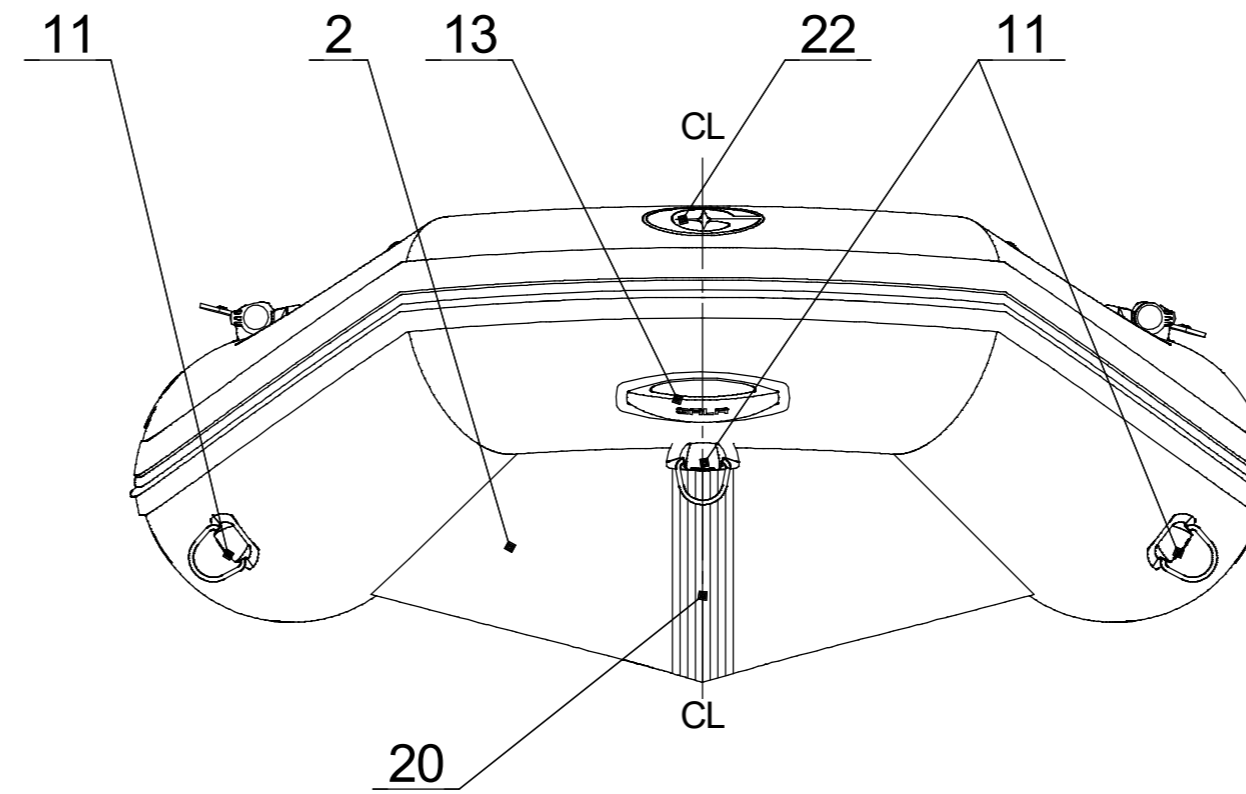
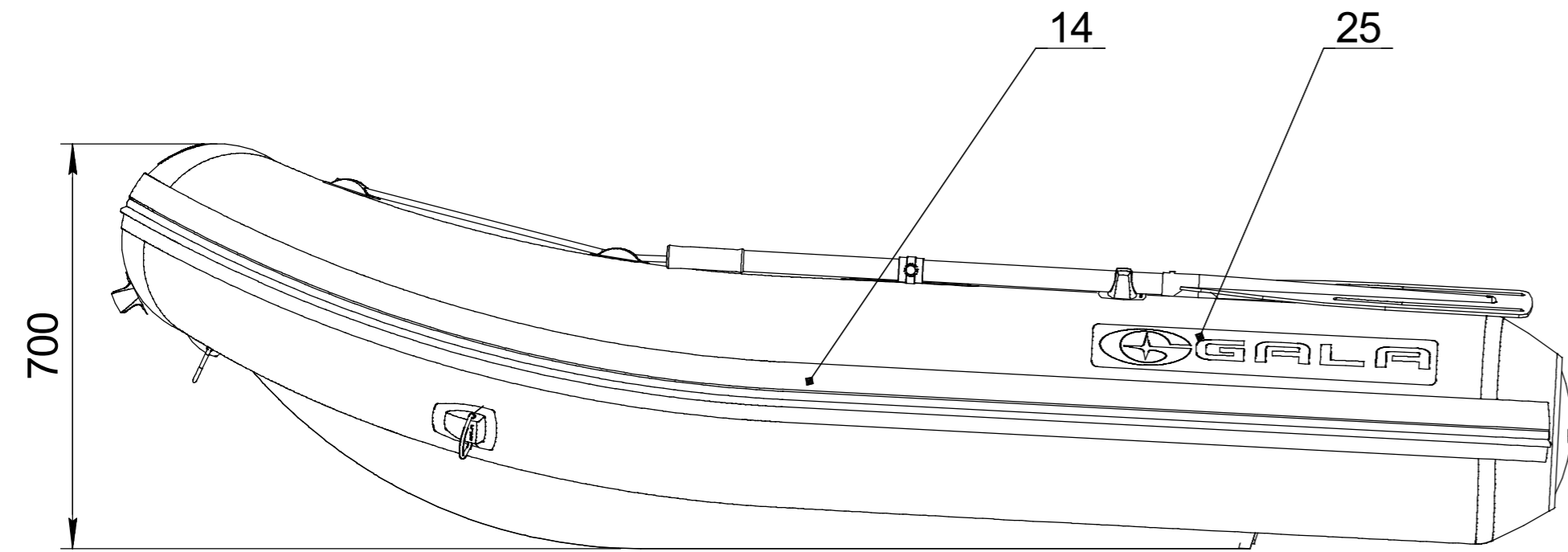


Inflatable boat GALA Sprinter S240D

Technical drawing



Builder's plate

GALA
INFLATABLE BOATS

Model **S240D** **3** + **1**

250 kg **550** lbs

3.7 kW **5** HP Type **II**

30 kg **66** lbs Cat. **D**

0.2 bar **2.89** psi International Standard ISO/FDIS-6185

MADE IN UKRAINE
 "CALIBR PROFI" LLC
4, Matlakhova Str., Dnipro, UKRAINE

Boat specification

Item	Item No	Description	Q-ty	Note
1		Inflatable tube for S240D	1	
2		Flat bottom for S240D	1	
3		Transom for S240D	1	
4		Floorboards set for S240D	1	
5		Over pressure valve	1	
6		Inflation-deflation valve	3	
7		Motor plate external	1	
8		Motor plate internal	1	
9		Expanding drain plug	1	
10		Tube end, PVC	2	
11		Towing eye, PVC	3	
12		Seat	2	
13		GALA handle, PVC	1	
14		Rubbing strake	1	
15		Oarlock	2	
16		Oar 140cm with rivert	2	
17		Seat holder	2	
18		Oar holder	2	
19		Lifeline	2	
20		Keel protector	1	
21		Inflatable keel with inflation-deflation valve	1	
22		GALA logo front	1	
23		Lifeline holder end	4	
24		Lifeline holder pass through	2	
25		GALA logo	2	
26		CIN plate	1	
27		Builder's plate	1	

DRAWN	NAME	DATE	ITEM No:
CHECKED			TITLE:
ENG APPR.			GALA Sprinter S240D
MFG APPR.			
Q.A.			
PROPRIETARY AND CONFIDENTIAL THE INFORMATION CONTAINED IN THIS DRAWING IS THE SOLE PROPERTY OF CALIBR PROFI LLC			SIZE
			DWG. NO.
			REV
SCALE: 1:10			WEIGHT:
			SHEET 1 OF 1