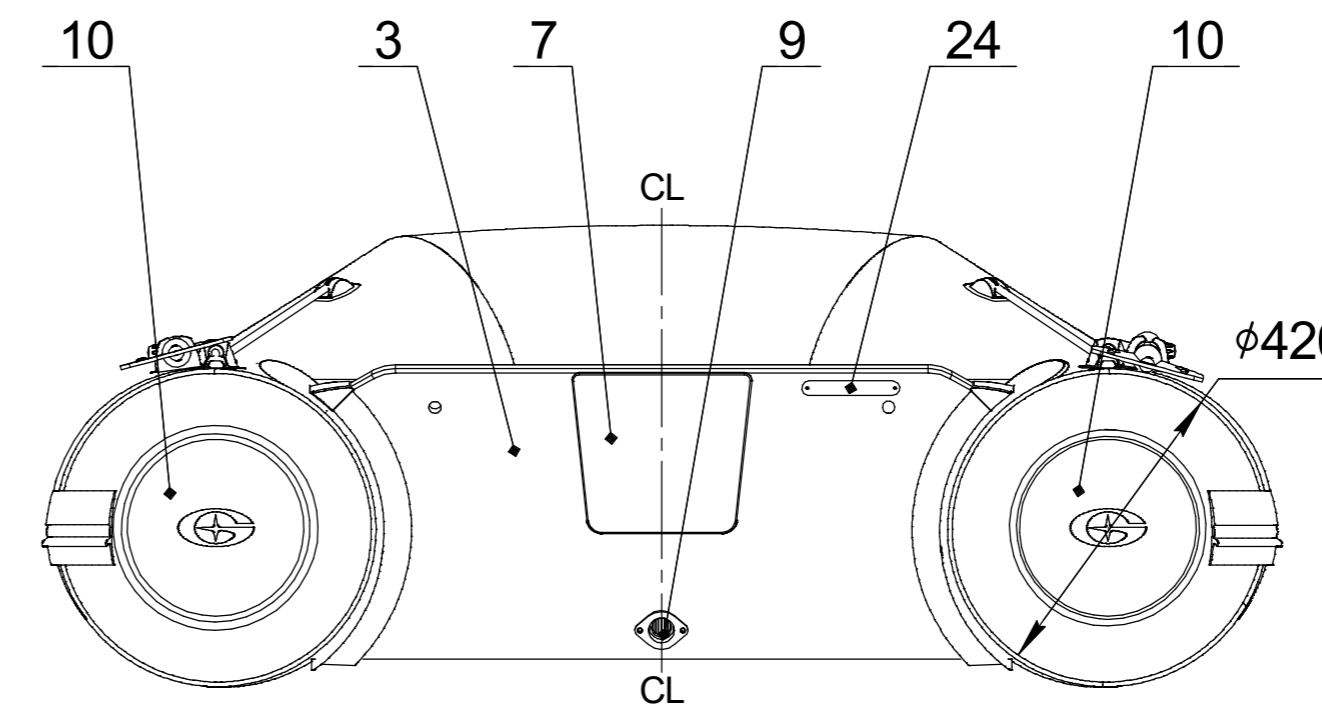
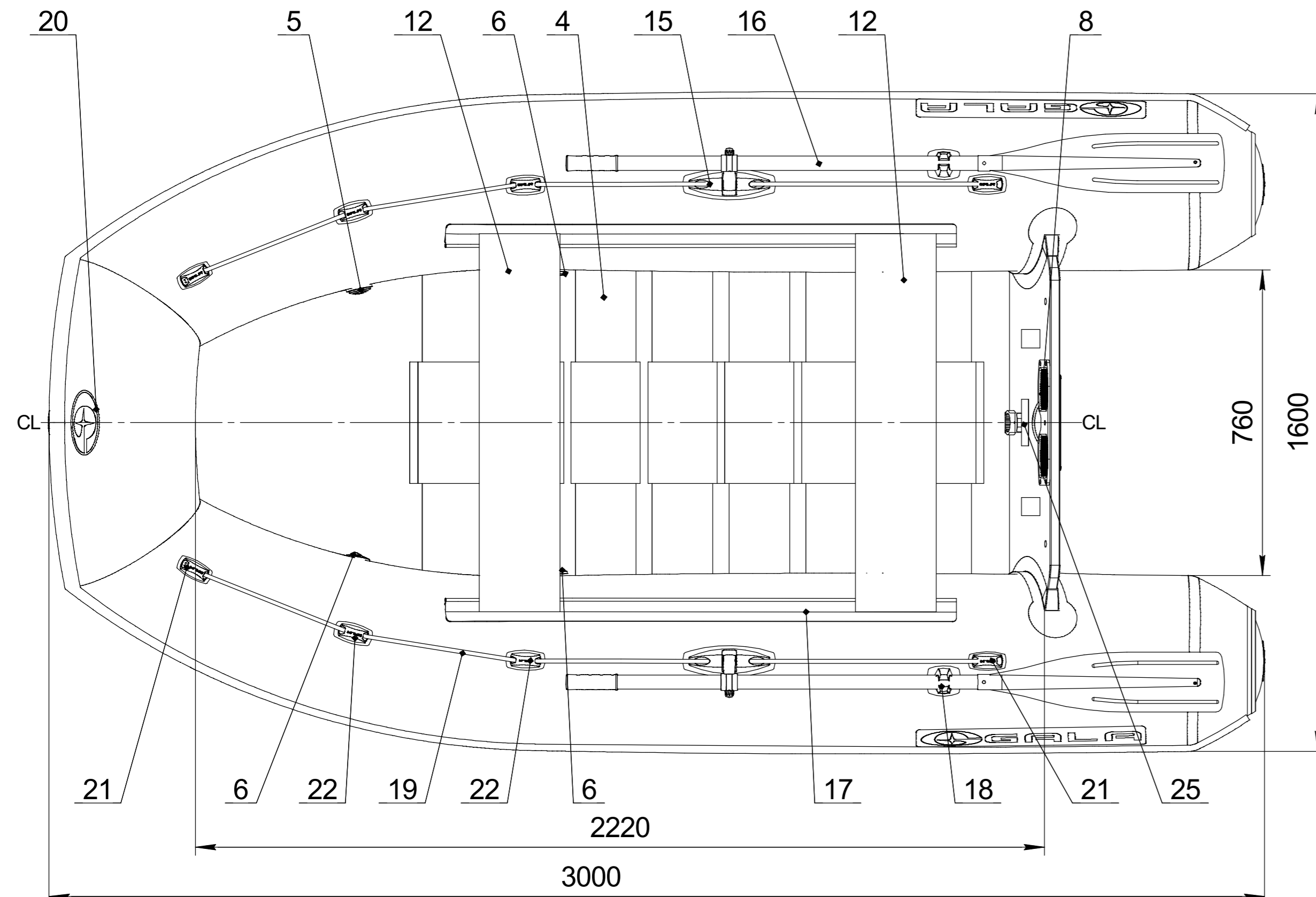
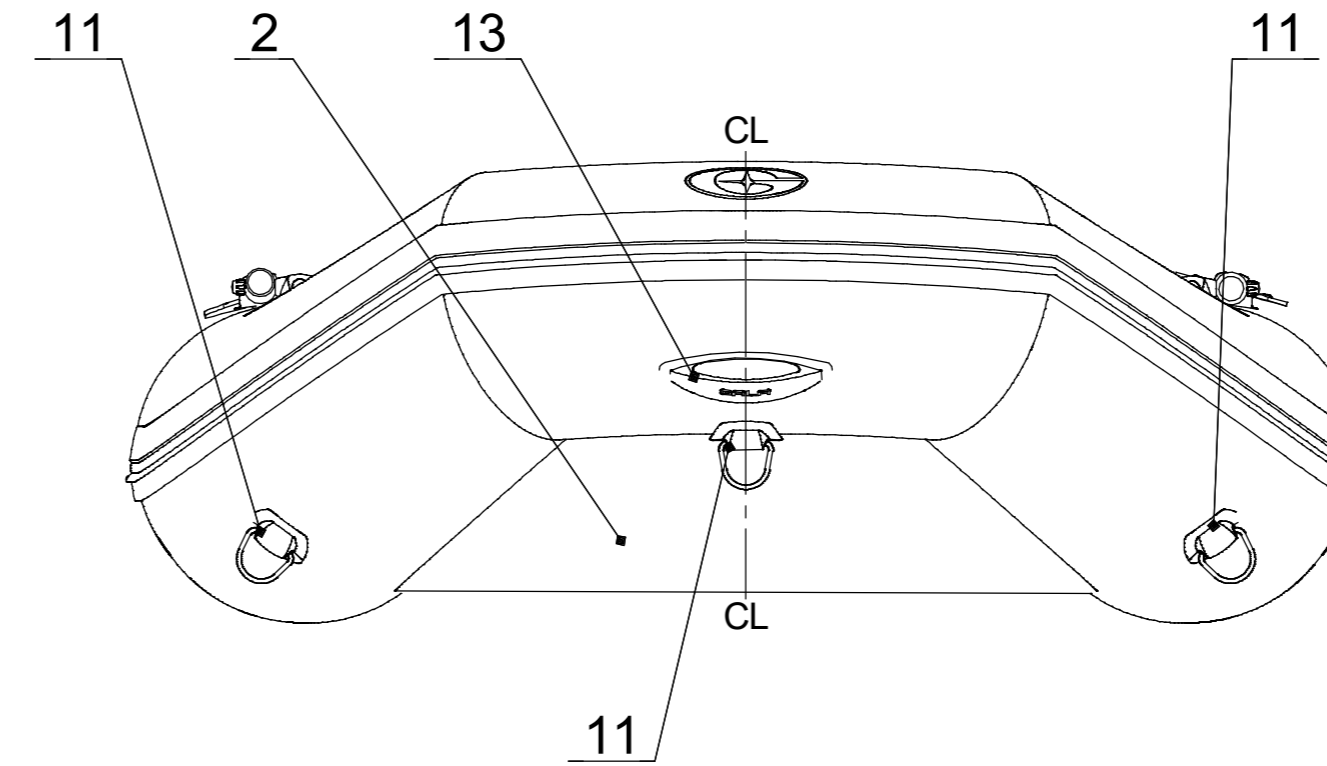
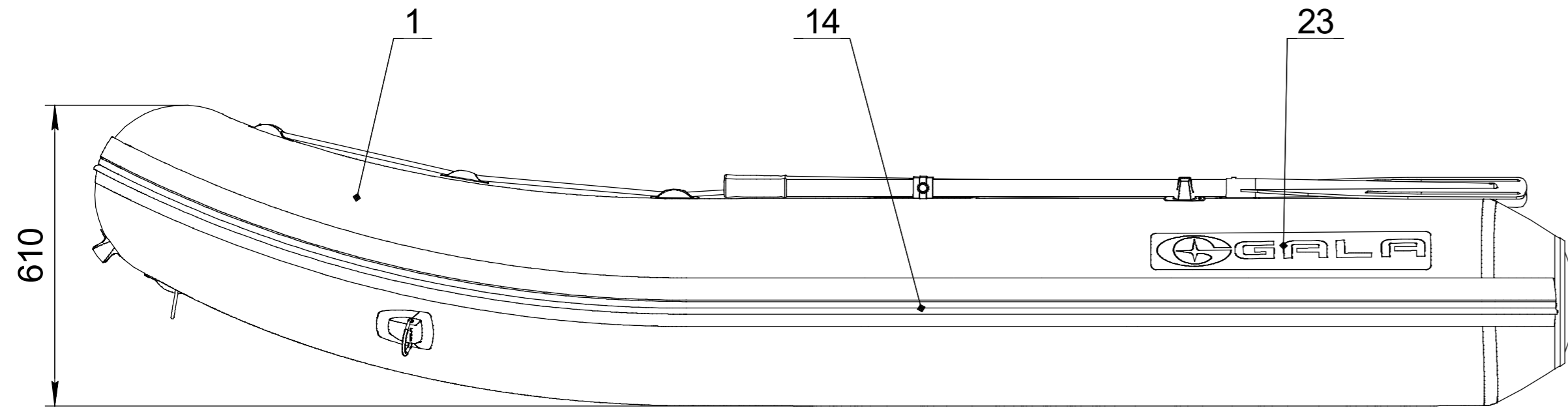


Inflatable boat GALA Sprinter S300

Technical drawing



Builder's plate

GALA
INFLATABLE BOATS

Model **S300** **4** + **1**

400 kg **880** lbs

11 kW **15** HP Type **V**

50 kg **110** lbs Cat. **D**

0.2 bar **2.89** psi International Standard ISO/FDIS-6185

MADE IN UKRAINE
"CALIBR PROF" LLC
4, Matlahova Str., Dnipro, UKRAINE

Boat specification

Item	Item No	Description	Q-ty	Note
1		Inflatable tube for S300	1	
2		Flat bottom for S300	1	
3		Transom for S300	1	
4		Slatted deck for S300	1	
5		Over pressure valve	1	
6		Inflation-deflation valve	3	
7		Motor plate external	1	
8		Motor plate internal	1	
9		Expanding drain plug	1	
10		Tube end, PVC	2	
11		Towing eye, PVC	3	
12		Seat	2	
13		GALA handle, PVC	1	
14		Rubbing strake	1	
15		Oarlock	2	
16		Oar 160cm with rivert	2	
17		Seat holder	2	
18		Oar holder	2	
19		Lifeline	2	
20		GALA logo front	1	
21		Lifeline holder end	4	
22		Lifeline holder pass through	4	
23		GALA logo	2	
24		CIN plate	1	
25		Builder's plate	1	
26				
27				

NAME	DATE	ITEM No:		
DRAWN				
CHECKED		TITLE:		
ENG APPR.		GALA Sprinter S300		
MFG APPR.				
Q.A.				
PROPRIETARY AND CONFIDENTIAL THE INFORMATION CONTAINED IN THIS DRAWING IS THE SOLE PROPERTY OF CALIBR PROF LLC		SIZE	DWG. NO.	REV
SCALE: 1:10		WEIGHT:	SHEET 1 OF 1	