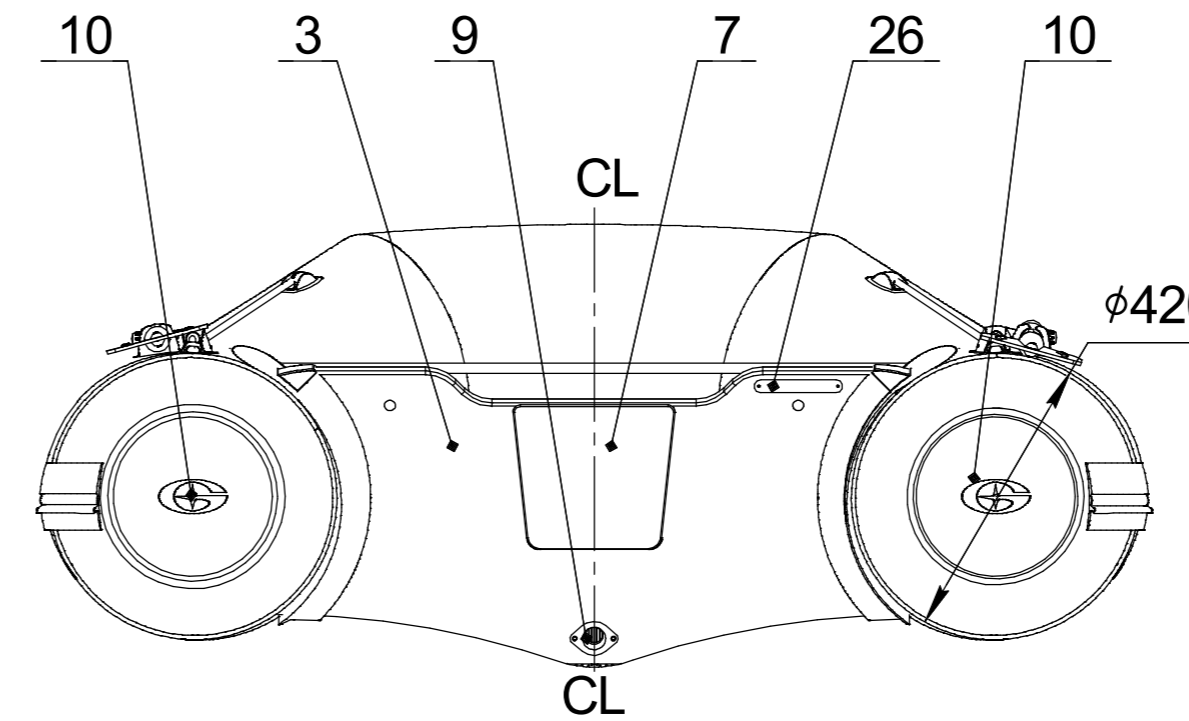
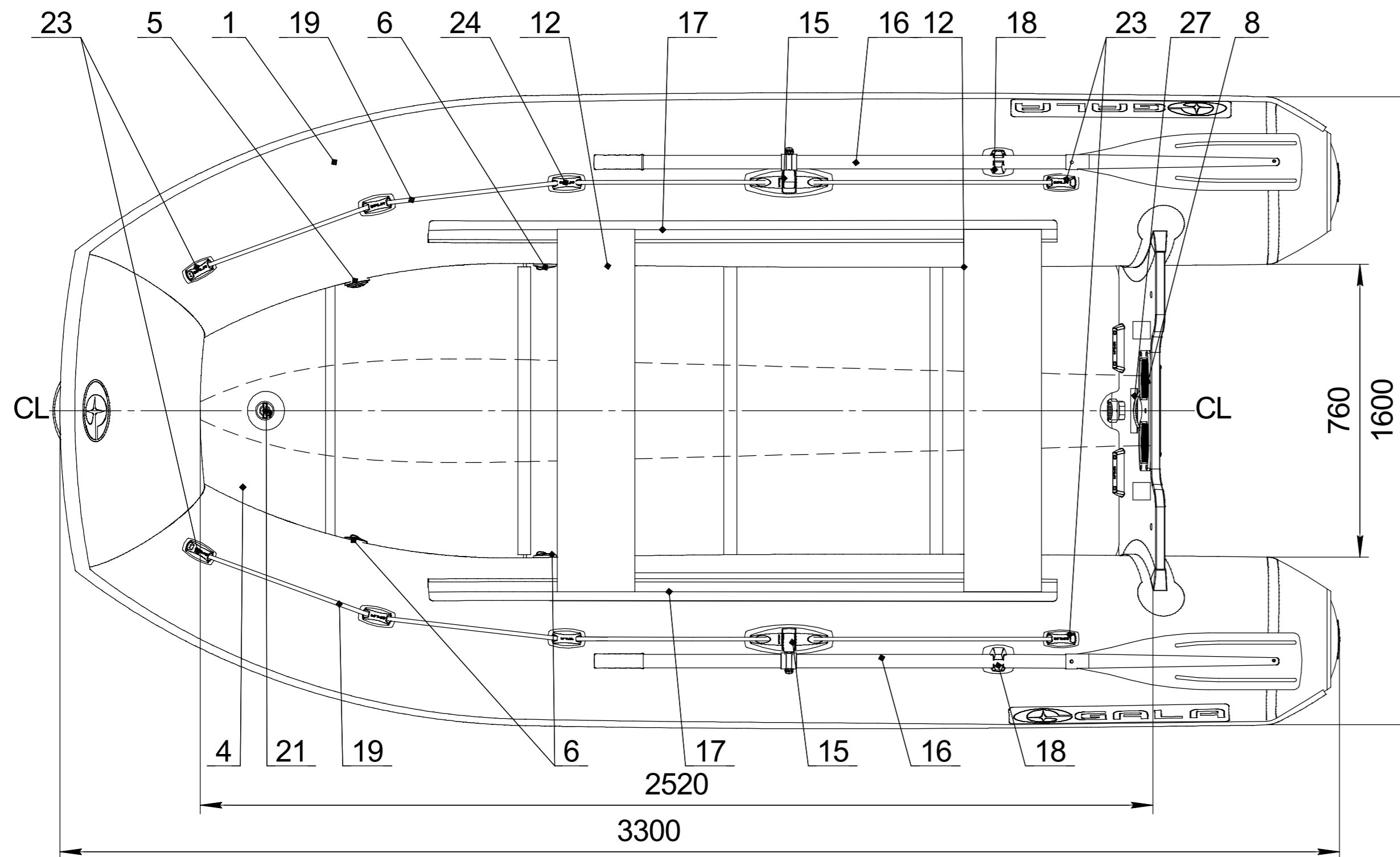
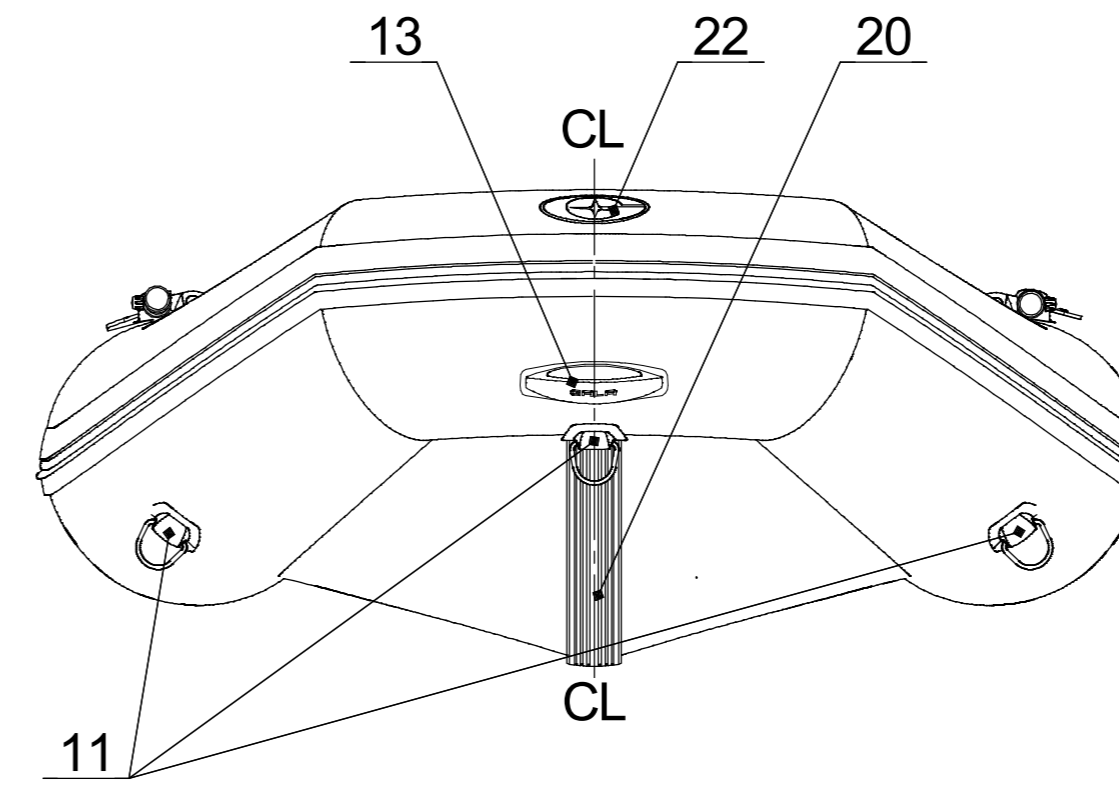
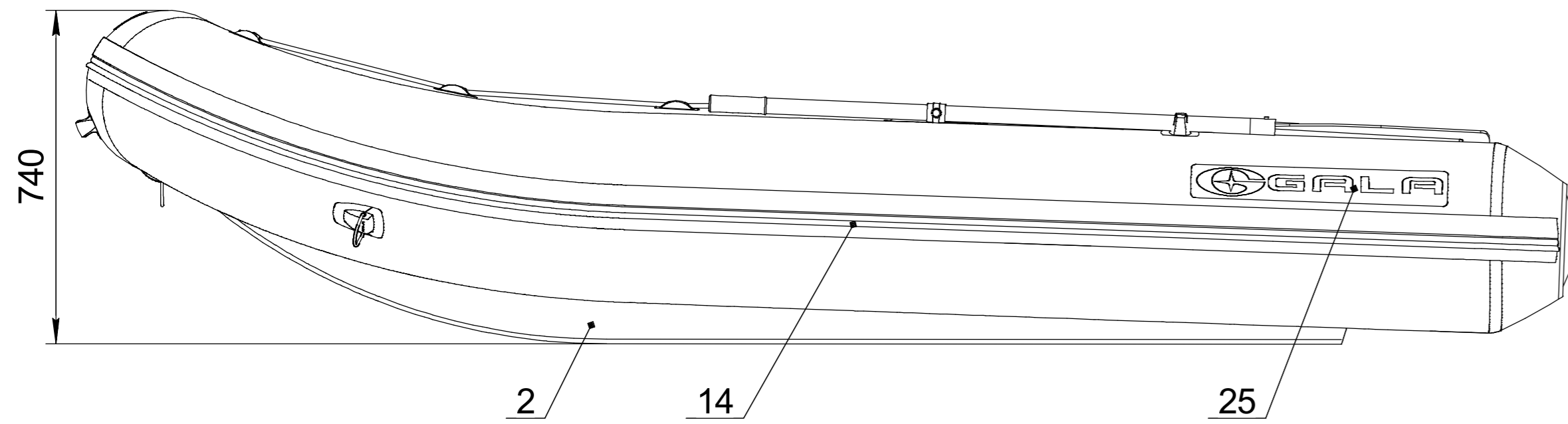


Inflatable boat GALA Sprinter S330D

Technical drawing



Builder's plate

GALA
INFLATABLE BOATS

Model: **S330D** **4** + **1**

450 kg **990** lbs

14.7 kW **20** HP Type **V**

60 kg **132** lbs Cat. **C**

0.2 bar **2.89** psi International Standard ISO/FDIS-6185

MADE IN UKRAINE
 GALAX GROUP

"CALIBR PROF" LLC
4, Matkakhova Str., Dnipro, UKRAINE

Boat specification

Item	Item No	Description	Q-ty	Note
1		Inflatable tube for S330D	1	
2		Flat bottom for S330D	1	
3		Transom for S330D	1	
4		Floorboards set for S330D	1	
5		Over pressure valve	1	
6		Inflation-deflation valve	3	
7		Motor plate external	1	
8		Motor plate internal	1	
9		Expanding drain plug	1	
10		Tube end, PVC	2	
11		Towing eye, PVC	3	
12		Seat	2	
13		GALA handle, PVC	1	
14		Rubbing strake	1	
15		Oarlock	2	
16		Oar 180cm with rivert	2	
17		Seat holder	2	
18		Oar holder	2	
19		Lifeline	2	
20		Keel protector	1	
21		Inflatable keel with inflation-deflation valve	1	
22		GALA logo front	1	
23		Lifeline holder end	4	
24		Lifeline holder pass through	4	
25		GALA logo	2	
26		CIN plate	1	
27		Builder's plate	1	

NAME	DATE	ITEM No:
DRAWN		TITLE:
CHECKED		GALA Sprinter S330D
ENG APPR.		
MFG APPR.		
Q.A.		
PROPRIETARY AND CONFIDENTIAL THE INFORMATION CONTAINED IN THIS DRAWING IS THE SOLE PROPERTY OF CALIBR PROF LLC		SIZE
		DWG. NO.
		REV
SCALE: 1:10		WEIGHT:
		SHEET 1 OF 1