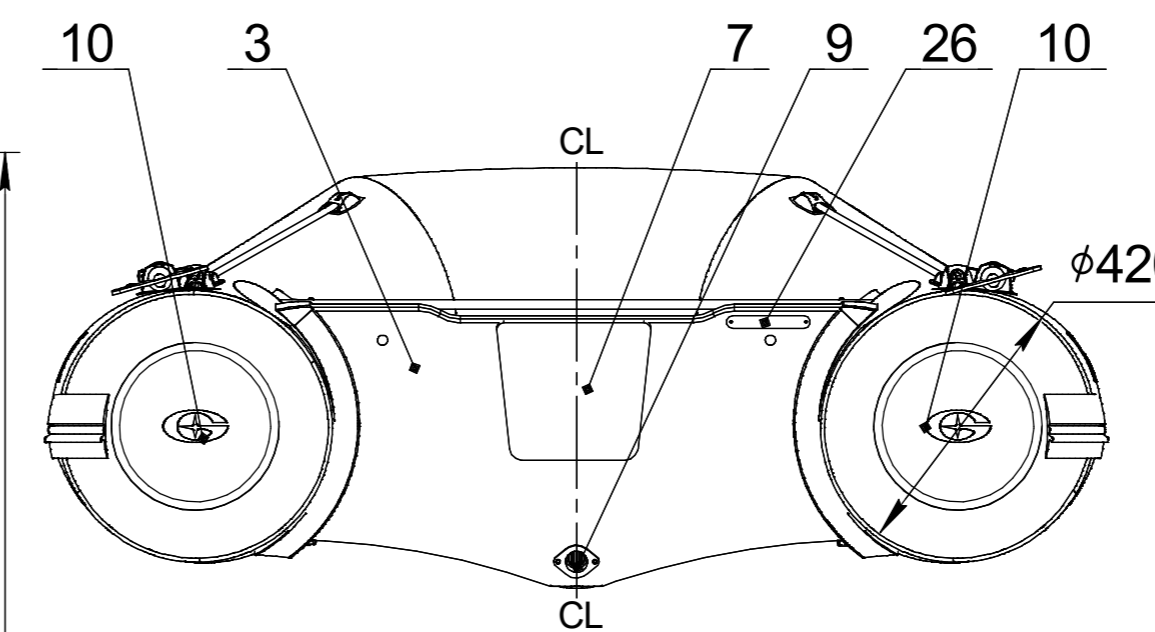
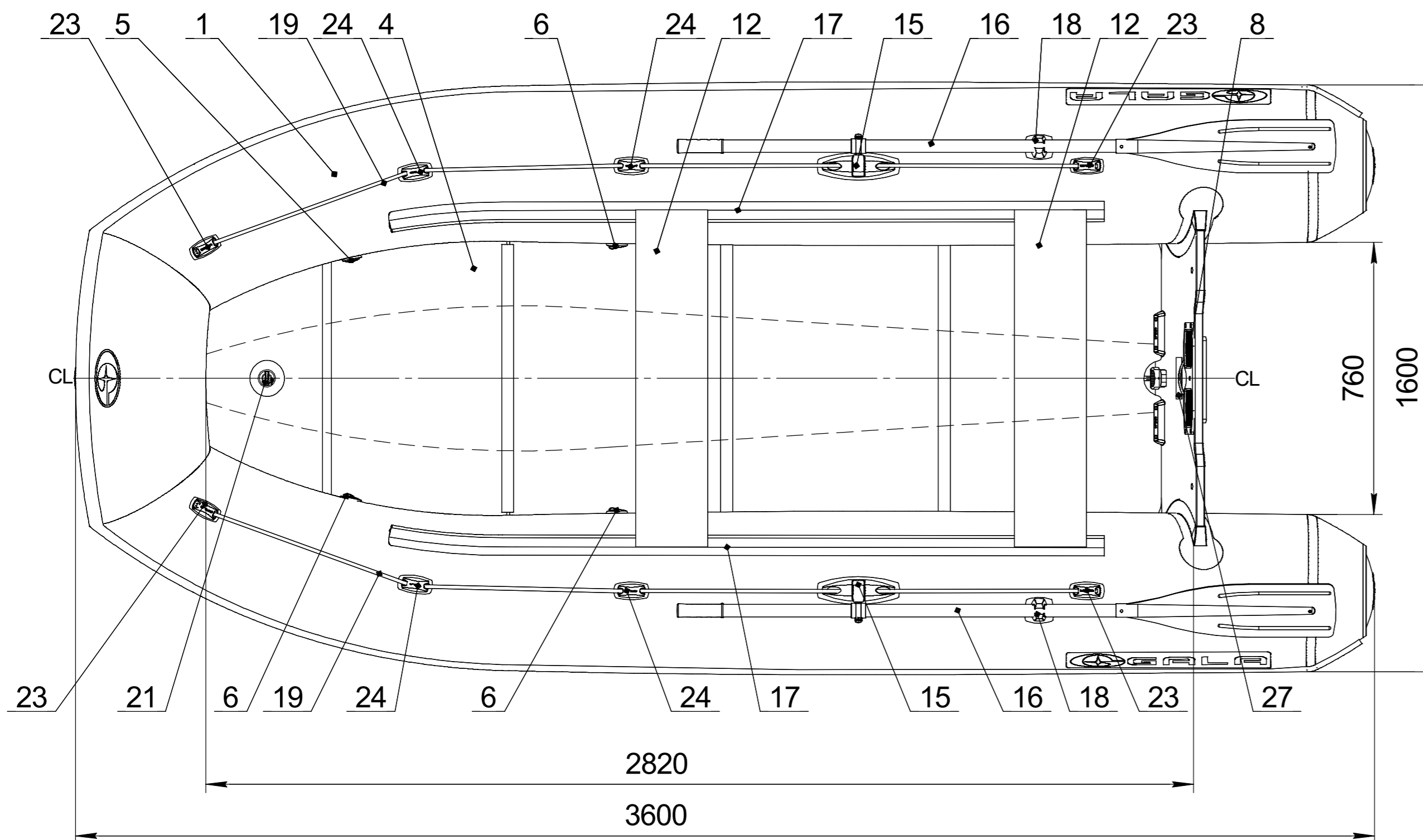
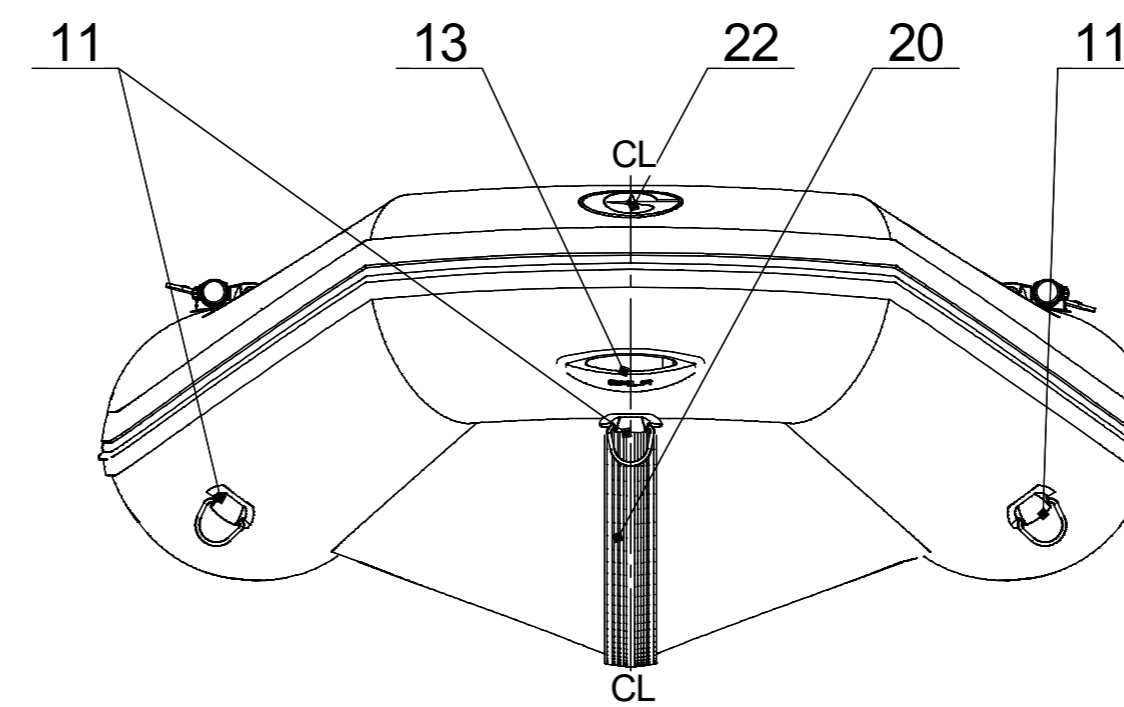
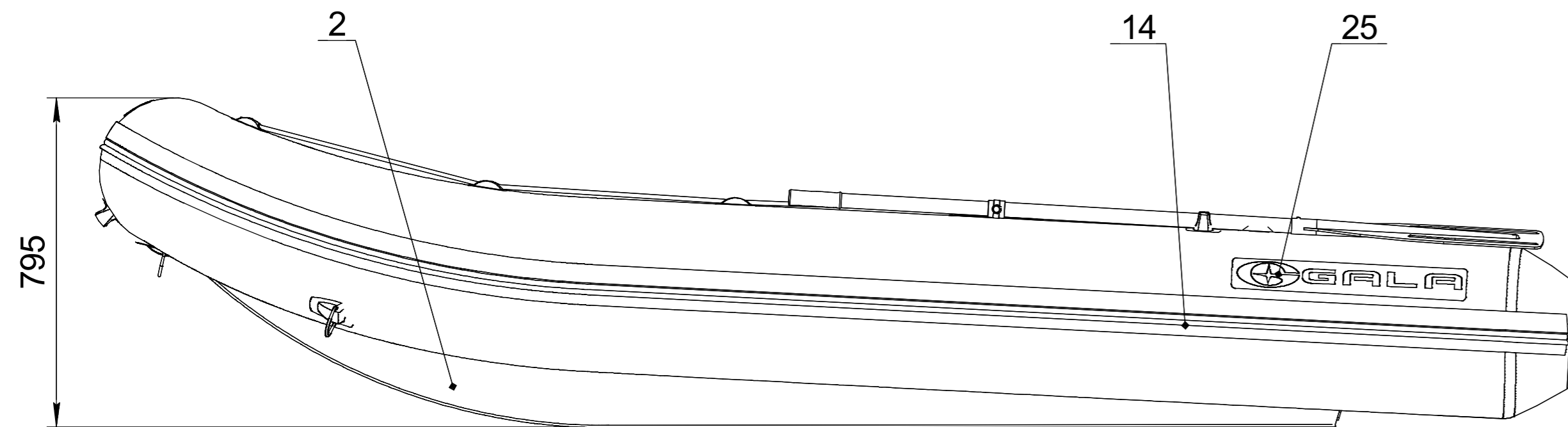


Inflatable boat GALA Sprinter S360D

Technical drawing



Builder's plate

GALA
INFLATABLE BOATS

Model **S360D** **5** + **1**

500 kg **1100** lbs

14.7 kW **20** HP Type **V**

60 kg **132** lbs Cat. **C**

0.2 bar **2.89** psi International Standard ISO/FDIS-6185

MADE IN UKRAINE

"CALIBR PROFI" LLC
4, Matlakhova Str., Dnipro, UKRAINE

Boat specification

Item	Item No	Description	Q-ty	Note
1		Inflatable tube for S360D	1	
2		Flat bottom for S360D	1	
3		Transom for S360D	1	
4		Floorboards set for S360D	1	
5		Over pressure valve	1	
6		Inflation-deflation valve	3	
7		Motor plate external	1	
8		Motor plate internal	1	
9		Expanding drain plug	1	
10		Tube end, PVC	2	
11		Towing eye, PVC	3	
12		Seat	2	
13		GALA handle, PVC	1	
14		Rubbing strake	1	
15		Oarlock	2	
16		Oar 180cm with rivert	2	
17		Seat holder	2	
18		Oar holder	2	
19		Lifeline	2	
20		Keel protector	1	
21		Inflatable keel with inflation-deflation valve	1	
22		GALA logo front	1	
23		Lifeline holder end	4	
24		Lifeline holder pass through	4	
25		GALA logo	2	
26		CIN plate	1	
27		Builder's plate	1	

NAME	DATE	ITEM No:		
DRAWN				
CHECKED		TITLE:		
ENG APPR.		GALA Sprinter S360D		
MFG APPR.				
O.A.				
PROPRIETARY AND CONFIDENTIAL THE INFORMATION CONTAINED IN THIS DRAWING IS THE SOLE PROPERTY OF CALIBR PROFI LLC		SIZE	DWG. NO.	REV
		SCALE: 1:10	WEIGHT:	SHEET 1 OF 1